

Legacy Input/Output Link Module



The Legacy Input/Output Module (LIOM) seamlessly bridges the technology gap to the Experion[®] Process Knowledge System (PKS), while protecting your investment in the LCS620, S9000 and Logic Manager control systems.



LIOM C200 LCS620 assembly

Benefits

- Complete and seamless integration of LCS I/Os into Experion
- All field wiring and I/O remains intact while the controller is replaced with a C200/C300 connected via the LIOM, guaranteeing your investment protection
- Minimized controller level migration to gain the benefits of Experion
- Supports peer-to-peer communication with C200/C300
- LIOM supports program retention, check pointing and on-process migration
- Use of Control Builder to build function blocks quickly and add controller functionality intuitively
- Continued product support for LCS620, S9000 and Logic Manager I/Os
- Translation of ladder logic to function block allows for easier migration to future generations of controllers
- Low-cost, high-quality translation services for ladder logic to function block available

Features

LIOM is an integrated solution for taking advantage of Experion, while still ensuring the best utilization of your existing LCS I/Os.

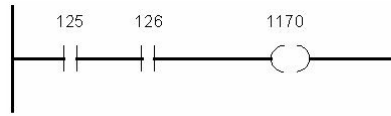
The LIOM solution replaces LCS620, S9000 and Logic Manager legacy processors.

LIOM inserts into the C200 controller chassis and is directly connected to the LCS I/O racks, eliminating the need for the existing controller. The LIOM supports peer-to-peer communication with C200 and C300 controllers, and connects to the Application Control Environment (ACE), which enables advanced program execution and communication back to LCS I/Os.

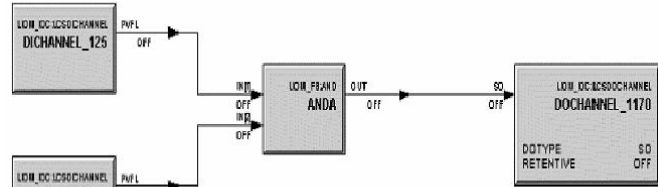
- Retains the same I/O subsystem and is compatible with serial I/O
- Supports 2,040 I/O points
- Supports redundancy
- LCS620 SIOM communicates directly with LIOM using serial link
- Alarm and event support through Experion

- LIOM supports the Qualification and Version Control System (QVCS) versioning that is standard with Experion
- LIOM modules can be bulk edited and bulk built using standard Experion bulk edit and bulk build functionalities
- LIOM controller can be migrated on process from the LIOM R300 release to future releases
- The Experion migration readiness tool is enhanced to include LIOM migration requirements
- Program retention allows user to save the configuration to flash memory on the LIOM. The LIOM retains the configuration and recovers from power failure.

engineering team is well equipped with competencies to migrate ladder logic to Experion’s function block.

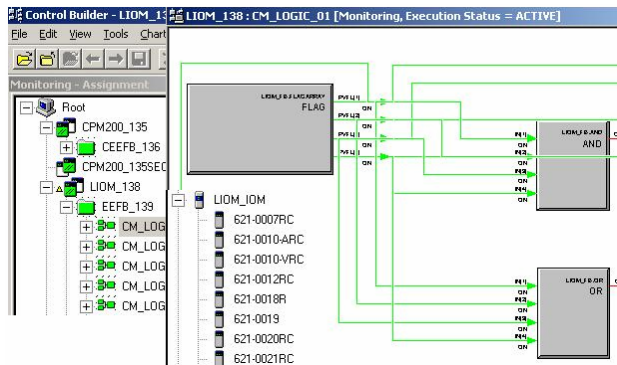


Example Ladder Logic line



Equivalent Function blocks

Typical ladder logic to function block equivalent



LIOM strategies and libraries in Control Builder

Ladder Logic and LIOM

Specific function blocks are built into Control Builder to support the ladder logic blocks. These blocks are available for the LIOM loop configuration. Implementing a C200 or C300 controller requires the conversion of 620/S9000/Logic Manager ladder logic to C200/C300 function blocks. The best solution for this conversion is through Honeywell experts trained in this area. This conversion is required only once per system.

Honeywell is ready for ladder logic migration to function block. Honeywell has provided equivalent function blocks to almost all the ladder logic elements of LCS620. In addition, Honeywell has added a few additional instructions (FBs), which will help users to build different application logic easily. Honeywell’s project

Capacity

- Two LIOMs per chassis
- 1,000 control modules per LIOM
- Two serial channels per LIOM
- 4MB memory on the motherboard
- 32 I/O racks per LIOM and maximum of 2,040 I/O points per LIOM

Availability

LIOM is packaged in three different categories, designed to meet specific needs. These packages are summarized as:

- A complete upgrade kit to fit into the space occupied by existing controllers
- A basic upgrade kit that includes the C200/C300, LIOM and Interface Module (ControlNet or Fault Tolerant Ethernet)
- LIOM module only

Model Numbers

Offering	Non-Redundant	Redundant
LIOM Upgrade Kit	TC-ZLIOMC (with ControlNet) TC-ZLIOMF (with FTE)	TC-ZLIMRC (with ControlNet) TC-ZLIMRF (with FTE)
LIOM Basic Upgrade Kit	TC-ZLIBPC (with ControlNet) TC-ZLIBPF(with FTE)	TC-ZLRBPC (with ControlNet) TC-ZLRBPF(with FTE)
LIOM Module	TK-ZLCSR1	2 of TK-ZLCSR1

LIOM Compatibility Matrix

Connectivity	Experion R210	Experion R300	
	C200	C200	C300
LIOM R100	YES	NO	NO
LIOM R300	NO	YES	YES

Detailed migration plan from LIOM R100 to R300 is available.

Experion® is a registered trademark of Honeywell International Inc.

For More Information

To learn more about LIOM, visit
www.honeywell.com/ps or contact
 your Honeywell account manager.

Automation & Control Solutions

Process Solutions

Honeywell

2500 W. Union Hills Dr.

Phoenix, AZ 85027

Tel: +1-602-313-6665 or 877-466-3993

www.honeywell.com/ps

PN-06-28-ENG
 July 2006
 ©2006 Honeywell International Inc.

