

# Powerful Calibration Management with DocuMint



**Honeywell's DocuMint is a powerful, flexible, automated calibration management system that promotes efficient management of plant assets and field instruments in one comprehensive database, enabling productivity and compliance.**

## Benefits

- **Multiple Calibrator Support:** Allows connectivity to all standard documenting process calibrators, enabling a wide range of calibrator connectivity and driving the centralized database benefits.
- **Palm® and PocketPC® Support:** Allows connectivity to handheld devices, eliminating paperwork and manual entries.
- **Automated Test Procedures:** Enables documenting process calibrators to perform automated tests and store the results.
- **Historic Trending:** Tracks the key parameters of an instrument/device and builds useful history for analysis to achieve optimum performance.
- **Web Enabled:** Key analysis data is available via web access, including audit critical information, summarized overdue tests, scheduling, reviews and electronic signatures.
- **Uniform, Repeatable Methods:** Certification-oriented, comprehensive reporting mechanism helps you comply with regulatory, safety and quality requirements.
- **Manages Preventative and Emergency Testing:** Plans, schedules, documents, improves and automates maintenance efforts, reducing production and maintenance costs.
- **Stores all critical test detail:** User-defined check and measure questions can be added for individual equipment or groups of equipment based on procedure.

The answers to these questions can be gathered and recorded with a calibration or as a standalone test.

- **Diverse Equipment Coverage:** Extends the calibration management to almost all devices, instruments and non-calibratable assets, such as valves, analyzers and rotating and safety equipment.
- **Flexible Integration:** DocuMint's calibration capabilities are integrated with Asset Manager, a comprehensive suite of advanced asset management applications embedded within Honeywell's Experion® Process Knowledge System (PKS).

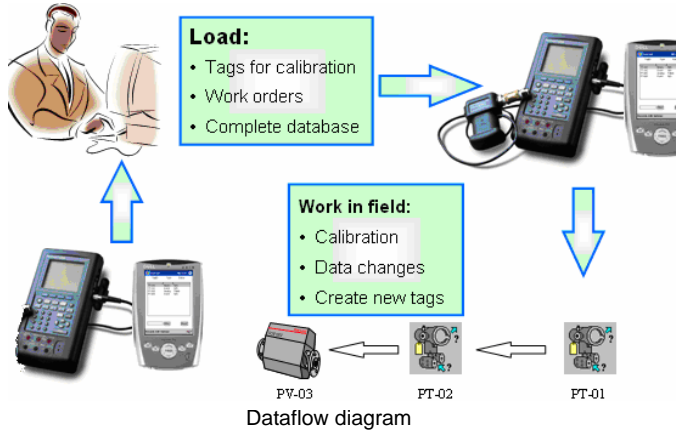
DocuMint can interface with current project and asset management systems working with work order systems, initiating work and closing tickets. It can work with other programs via ODBC, as well as standard export files such as DBFs and XML, allowing the technician to have one database interface for all daily job requirements.



Direct HART® access from the database is available through a HART modem, through the 2020 Calibrator with addition of the MC Toolkit or through the PocketPC with a HART modem.

**DocuMint Adapts to Your Workflow**

DocuMint is designed to complement your existing workflow and optimize the dataflow, thus increasing the overall performance of your maintenance effort.



DocuMint allows you to enter all the relevant information about instruments/devices, providing a single instrument/device knowledge base for your plant.

**Reduce Costs**

By using DocuMint, a process plant or mill can dramatically reduce calibration and maintenance costs while improving compliance and quality recordkeeping. Plants can save time and money by keeping accurate, consistent data on all instrumentation and plant assets, and extracting the correct information from the stored data. You can save time improving your maintenance routines and quickly accomplishing quality calibrations and compliance audits.

Analysis information available via web browser access reduces the number of computers on which the program must be installed. An unlimited visitor option allows direct access to the database for management, engineering and others without added cost.

**Data Management**

Correct and accurate information about instrumentation characteristics, calibration and maintenance is critical to maintaining quality and complying with regulations. The DocuMint system is specifically designed to handle field instrumentation data. This gives you the flexibility to store critical information on simple sensors as well as the most complex control data for devices such as valves and rotating equipment.

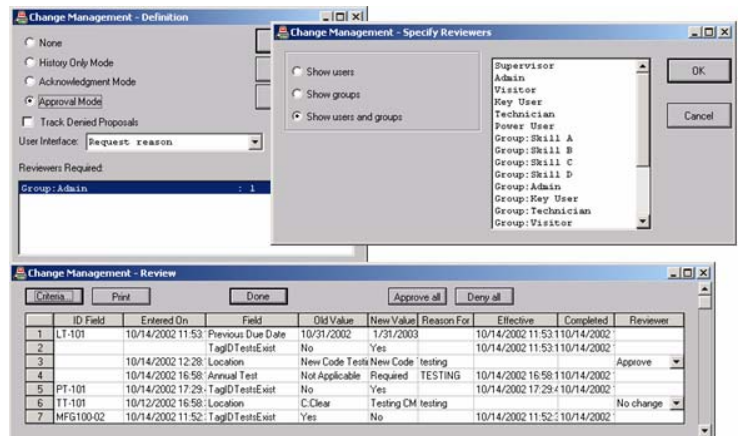
In addition, DocuMint includes more than 200 predefined instrument templates. For example, DocuMint knows the difference between a thermocouple and an RTD and guides the data setup accordingly.

**Easy Integration**

DocuMint integrates well with design, maintenance and financial management systems, such as Maximo, Intools, AutoCad and others. With this capability, DocuMint can maintain calibration data while responding to work order and cost tracking requirements of various productivity and enterprise management systems.

**Change Management**

DocuMint can track any changes that are made, when they were made and who made them. DocuMint has an automated change management solution that retains history on any/all changes made to your assets. A secure database tracks and stores the information about your assets and their maintenance history. Additional security models and power utilities are built into the system to ensure flexibility and data integrity.



DocuMint controls and tracks database changes

**Accuracy-Driven Automation**

The DocuMint scheduler provides an easy and efficient process for planning and managing calibration and field inspections. Simply download the inspection forms to a handheld computer or a documenting field calibrator. Then walk through the plant, record your inspection and calibration results, and unload them to DocuMint. All asset data is easily accessed for evaluation, analysis and printed reports to meet your specific needs.

When a technician selects an instrument test setup from the field calibrator's memory and initiates a test-and-calibration routine, the calibrator automatically performs the test and stores the results. All paperwork and manual calculations that are usually associated with field tests and calibrations are eliminated, making the testing process faster and more accurate. Electronic signatures are also available.

Inspecting and testing non-calibratable assets, such as valves, analyzers and rotating and safety equipment, can be automated using the Field Entered Data (FED) option. Using the same tools to schedule calibrations and the same procedures to automate field tasks, you can create, schedule and complete specialized test and inspection routines in DocuMint.

When the field inspections are completed, you can upload all your data to DocuMint. Gathering data on all plant assets is simple and straightforward. Storing all your asset data in one comprehensive database reduces the time spent managing maintenance tasks and information.

## Powerful Search

DocuMint's powerful search engine allows for complex searching of equipment or test results with ease. DocuMint's tools enable the user to navigate and search the structure of the plant or mill to find required information. The detailed history of any asset's performance is quickly accessed, analyzed and reported.

DocuMint provides tools to analyze your valuable calibration and inspection data, and turn that data into useful information.

Whether you need to define the best test interval to maximize your manpower or evaluate which manufacturers are performing the best in your operation, DocuMint can provide the information to make the decision.

DocuMint's networking capability puts the information you need where you need it most. It can be installed as a single-user, networked system and as a client/server application. DocuMint is available even to the most remote areas of your operation and can be accessed by as many people as needed.

Related Honeywell's offerings include:

- Calibration services delivery using ServiceMint
- Metrology services
- Training, technical support and custom solutions

**For More Information**

To learn more about DocuMint, visit [www.honeywell.com/ps](http://www.honeywell.com/ps) or contact your Honeywell account manager.

**Automation & Control Solutions**

Process Solutions

Honeywell

2500 W. Union Hills Dr.

Phoenix, AZ 85027

Tel: +1-970-204-1454 or 800-228-9589

[www.honeywell.com/ps](http://www.honeywell.com/ps)

PN-08-08-ENG  
March 2008  
© 2008 Honeywell International Inc.

**Honeywell**