

Production Control Center Capacity and Distribution Planner

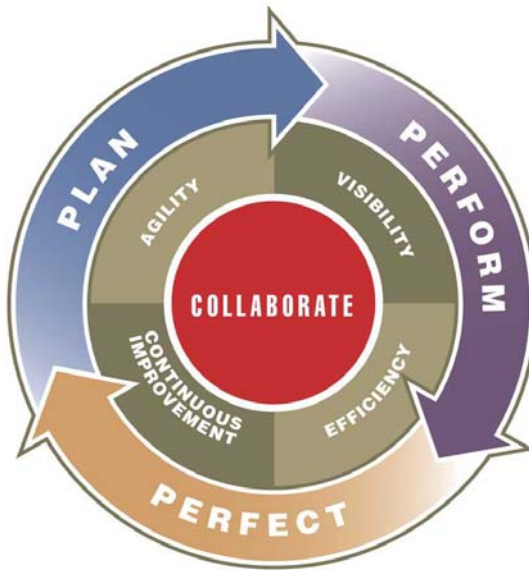


Honeywell's Oil & Gas application suite, Production Control Center (PCC), provides advanced planning and scheduling functions for improved production management.

PCC provides the application framework including the main user interfaces; the PCC Capacity and Distribution Planner module to manage the planning and scheduling. Where appropriate, other associated components can be included for KPI reports and ERP integration using compatible standard software.

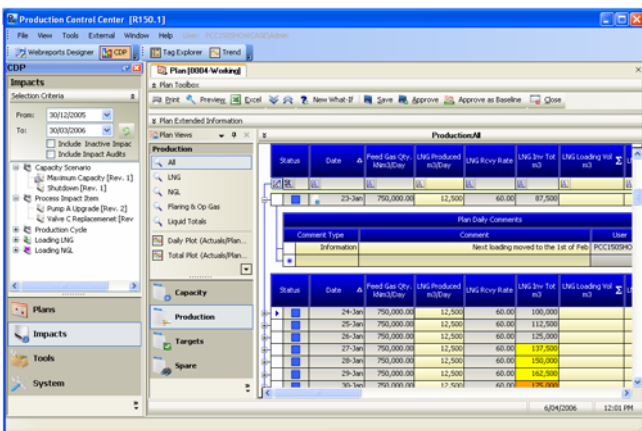
The solution supports the continuous business improvement in oil and gas production. Business improvement is based on the guiding principles of Plan, Perform and Perfect.

Honeywell PCC enables customers to realize the following benefits from CDP:



- **Best Practice** - Supports work processes focused on better planning and scheduling by providing a controlled planning environment and minimising errors in the planning process.
- **Simulation** - "What If?" capability to enable the scheduler to manipulate the schedule and see quickly the impact of the change.
- **Modelling** - Campaign or production modes to represent varying yield and capacity profiles.

- **Performance Evaluation** – Compare actuals against planned data (latest approved and baseline).
- **Security** - Hierarchy of access rights for creating, modifying and viewing plan or components of the plan. Varied views and access rights for different owners / operators.
- **Easy to use and flexible** - Highly configurable and extendable. Forecasting configuration similar to formula creation in MS Excel (without the constraints).
- **History** - View of previous plans available for review.



Capacity Distribution Planner

CDP is an application that facilitates the planning, scheduling and analysis of the supply chain management process; from plant capacity planning and production planning through to the offtake and/or loading of cargo. CDP is used to create plans and forecasts to evaluate and monitor production and product inventories. By storing the information in a single repository CDP facilitates the management of data from both an application's and user's perspective and becomes the basis for an effective integrated planning process. CDP's configurable workflow engine supports the full life cycle of plan management from the creation to the approval of the plan.

CDP is designed to take advantage of Tag Explorer and PCC Trend, making it possible to view collected actual data against planned data in graphical format.

CDP Features

- Highly configurable planning model
- Long term ADP planning
- Structured planning by using Impacts
- Advanced built-in calculation engine
- Advanced built-in visualization engine for on-screen alerts
- Supports any real-time datasource
- Granular security model
- Configurable planning periods
- Separate Actuals Processing for integration of production data

For More Information

Learn more about Honeywell's Oil and Gas solutions and their benefits, visit our website www.honeywell.com/ps or contact your Honeywell account manager.

Automation & Control Solutions

Process Solutions

Honeywell

2500 W. Union Hills Dr.

Phoenix, AZ 85027

Tel: 877.466.3993 or 602.313.6665

www.honeywell.com/ps

Other Supporting Components

Both Tag Explorer and Trend are integral components of CDP and come standard as part of the PCC base package.

PCC Tag Explorer

Tag Explorer provides easy access to all tags within the available data sources. The standard categories in Tag Explorer group tags based on different criteria, making it easy for the user to search for and find required tags. This grouping is configurable and users are also able to set up multiple private folders to create their own grouping structure.

PCC Trending

PCC Trend is a tool for trending tags with the following functions:

- Zooming with "drill-down" functionality
- Scaling and plot smoothing
- X-Y plots and multiple Y-Axis
- Exporting to Excel, text file or as an image
- Printing
- Trend up to 20 tags in the same window
- Bad data is indicated by an "X"
- Seamless integration with other applications (can be launched from another application that has integrated trend functionality or from the PCC main window)
- Supports a drag/drop interface, making it possible to add tags to a trend window by dragging a tag definition from another application (for example Tag Explorer) and dropping it onto the trend

Requirements

PCC and CDP are designed to run on Microsoft Windows XP, Windows 2000 and Windows 2003.