



PC Specials*



Dell Gx1 (450/500 Mhz) GUS Stations

- Desktop and Tower - (51196982-100-RP and 51196982-200-RP)

\$1250

Dell Gx200 (866 Mhz) GUS Stations

- Desktop and Tower - (51198718-100-RP and 51198718-200-RP)

\$1500

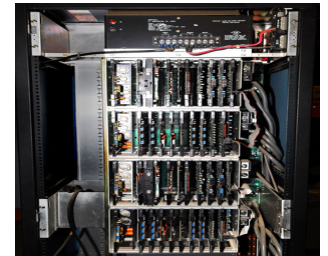
WKS1 Workstations and Servers

- 51199171-200 (workstation) and 51199171-100 (server)

\$2500

Multi Function Controllers (MFC)

Large variety of boards and module variations, including several complete cabinets and spare PWAs



Compact GUS System (Lease Only)

* GUS stations (Win2000 or NT)

* Cabinet containing NIM, HM and HPM with power supply

	TDC	TPS
System	\$ 3,300	\$ 3,600
Op Station/GUS	\$ 1,250	\$ 1,650
AM/APP	\$ 950	\$ 1,150
History Module	\$ 1,250	\$ 1,250
HPM	\$ 850	\$ 850
NIM	\$ 400	\$ 400
Hiway Gateway	\$ 500	\$ 500
EPLCG	\$ 550	\$ 550

Programmable Logic Controllers (PLC)

Several PLC type controllers and numerous spare PWAs (Contact us to price your required configuration)

- LM 620 & 630, • 9200 CTRL, • 9100 CTRL, • I/O



Z Style Consoles

(Contact us to price your required configuration)



- Table Top Z
- Single Bay US / GUS / UxS
- Dual Screen (1 over 1) US / GUS / UxS

Other Specials



LCNP4 PWA

- 51403299-200-RP
\$6000

For More Information

Promotion is subject to availability. For more information, call your Honeywell account manager or 800-457-2968, or e-mail certifiedrecycledparts@honeywell.com.

Automation & Control Solutions

Process Solutions

Honeywell

2500 W. Union Hills Dr.

Phoenix, AZ 85027

Tel: 877.466.3993 or 602.313.6665

www.honeywell.com/ps

August 2006
© 2006 Honeywell International Inc.

Honeywell